



HYUNDAI | NEW THINKING.
NEW POSSIBILITIES.

THE ALL NEW HYUNDAI *ix20*





WHO SAYS OUTDOORS
CAN'T BE INDOORS?

Specification may vary. Panoramic sunroof available as an option only. Please contact your local Hyundai dealer for further details.



With the new Hyundai ix20, you really can have it all. This stunning multi-purpose vehicle (MPV) is an expert at creating a special atmosphere. Its optional panoramic sunroof offers the next best thing to driving with the roof down: the cabin is flooded with light, adding to the spacious feeling inside. Plus, your passengers can always admire the view above. To take in the air, the front section of the sunroof tilts and slides at the touch of a button. It's clever ideas like these that turn every journey into a spectacle.



- 5 YEARS UNLIMITED MILEAGE WARRANTY
- 5 YEARS ROADSIDE ASSISTANCE
- 5 YEARS VEHICLE HEALTH CHECK

Fixed dimensions. Endless room to enjoy.

Compact on the outside, yet spacious on the inside. It's not rocket science - just another smart solution for those who always expect a little more. Thanks to the unique Hyundai ix20 spaciousness, you'll enjoy an airy cabin with plenty of room for a comfortable ride. Quality materials throughout add to the overall feeling of well-being.



Seats

The ix20 offers fabric upholstery, providing the right balance for any length of journey.



Images are used for illustrative purposes only. The ix20 interior is available in black knit only. Please consult your local Hyundai Ireland dealer for further information.





Being in charge has never been so relaxing.

Welcome to the driver's world. A place designed around you, where intuitive technology is always at your fingertips. We've taken great care to create an ergonomically designed cockpit that puts you firmly in charge of enjoying the ride.

A. Instrument panel

You'll notice the blue illumination of the cylinder-style instrument dials - they both look sporty and reduce eye strain. You can choose between Conventional Cluster or Supervision Cluster* with two LCD screens.

B. Trip computer*

The adjacent trip computer displays vital data about your journey as text or icons: average speed, time driven, distance to empty, distance of trip A & trip B as well as instant and average fuel consumption. These are some of the many functions accessible via the handy steering remote controls.

C. Steering remote control*

Keep your hands on the wheel and your eyes on the road. Simply adjust the audio system volume, make or receive calls, access the trip computer via the steering wheel buttons.



5.300

Bluetooth

FM AM

DISC MEDIA

MP3 TRACK

5 4 3 2 1

AUTO

A/C

120 140 160 180

80 100 km/h

P 02:40

100 414 km

3 X 1000rpm

2 4

HYUNDAI

SABRIA

A/C Port

All the comforts of home on the road.

Gone are the days when a car simply took you from A to B. In the Hyundai ix20, you can expect to be entertained all the way. The centre console provides the key to this unique experience. It houses smart technology for those who want to get more out of their journey - without missing out on home comforts. Play your favourite music or choose the perfect temperature on board - with the ix20's intuitive technology, it couldn't be any simpler.



A. Audio system

Play your favourite music courtesy of the sophisticated Hyundai audio system. It features a radio, CD player as well as USB and AUX outlets for your MP3 player. And with the optional iPod cable, you've got access to your entire music collection for any length of your journey. All this, in perfect sound quality thanks to six high-quality speakers placed throughout the cabin.



B. Bluetooth

Should you need to get in touch with friends or family en route, standard hands-free Bluetooth lets you make phone calls without taking your eyes off the road. That's another piece of safe and clever technology on board the ix20.

C. Air conditioning

ix20 features standard manual air-conditioning with the added bonus of a cooling function for the glove compartment.

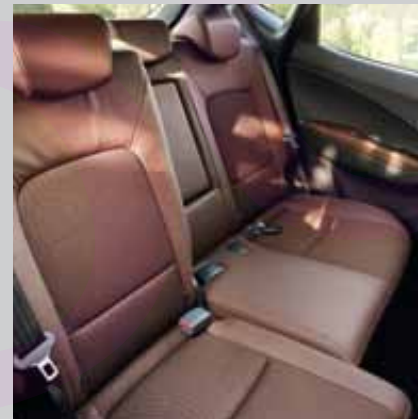
Because sometimes one car just isn't enough.

Whatever you want the Hyundai ix20 to be, it delivers: comfortable tourer or spacious shopping carrier, holiday companion or sports adventurer. This Hyundai truly deserves the name "multi-purpose" vehicle.

The flexible seats provide the key to its versatility, with rear seats that fold and dive, recline and even slide backwards and forwards to create a world of options.

Fill the 440 litre luggage compartment, or increase the volume by turning the ix20 into a 2, 3 or 4-seater thanks to the 60:40 split rear seats.

No wonder the ix20 seems like many cars all rolled into one.



You can maximise your storage area with the two-step standard flexible floor. Simply adjust its height to carry more items above or below the luggage floor. There's also a luggage undertray which keeps your belongings safely stored beneath the flat luggage surface. To secure your load, a luggage net and hooks are also available.



CAN POWER BE GENTLE?

Dynamic and efficient. Don't expect anything less.

True to form, the new Hyundai ix20 doesn't compromise when it comes to driving pleasure. Our engineering expertise brings you two advanced power trains, combining poise with class-leading efficiency. Both engines, 1.4 petrol or common rail 1.4 diesel with 90PS, offer state-of-the-art technology and excellent levels of refinement and fuel economy.

Transmission

Both petrol and diesel engines are coupled with smooth and efficient manual transmissions. The 1.4CRDi with six-speed transmission and the 1.4 petrol with five speed transmission.

Shift Indicator

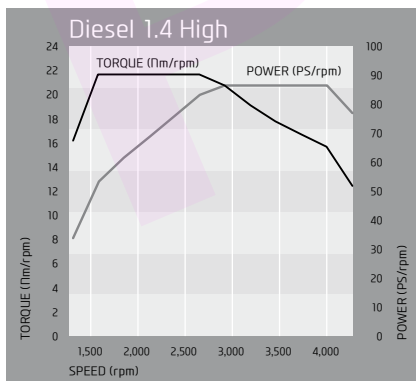
All manual models are fitted with a Shift Indicator which shows you the best time to change gear. That's another clever solution to help you save fuel.

Suspension and steering

The precise Motor Driven Power Steering (MDPS) and a torsion rear axle suspension ensure great handling and comfort.



- 5 YEARS UNLIMITED MILEAGE WARRANTY
- 5 YEARS ROADSIDE ASSISTANCE
- 5 YEARS VEHICLE HEALTH CHECK



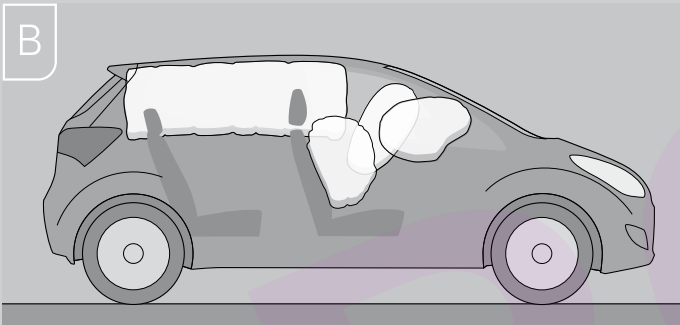
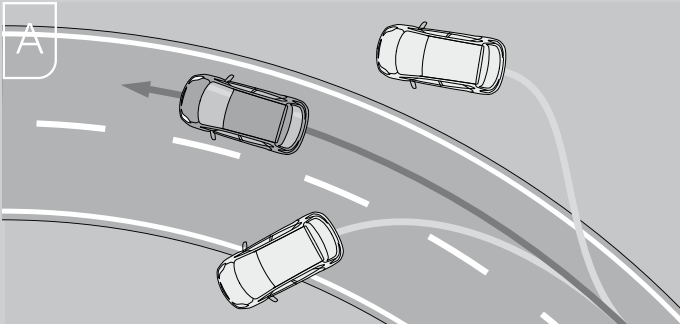
Specification may vary. Please contact your local Hyundai dealer for further details.



As safe as houses,
wherever you are.

Your home is where you feel most protected. So wouldn't it be great to enjoy the same sense of security when you're out and about? For complete peace of mind, the new Hyundai ix20 features a highly robust reinforced passenger safety cell and advanced airbags.

All the while, sophisticated active safety features help avoid dangerous situations in the first place. These comprehensive measures are further proof that your safety and well-being is at the heart of everything we do.

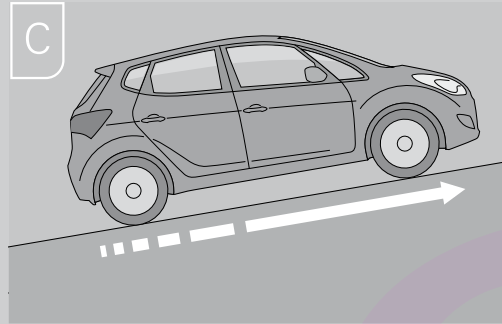


A. Electronic Stability Control (ESC)

ESC helps control your vehicle when necessary. The system applies braking power automatically to individual wheels to counter oversteer or understeer. Engine power is also adjusted until control is regained. ESC is combined with HAC.

B. Airbags

Surrounded by the best: to reduce injury in a collision, the ix20 has two front airbags which deploy at reduced force, as well as two side airbags and two curtain airbags in the first and second seat rows.



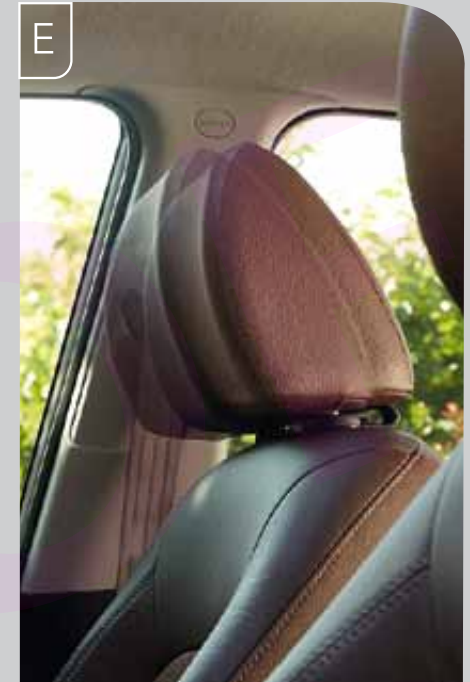
C. Hill Start Assist Control (HAC)

HAC is a handy feature for starts on steep hills. The system allows you to get ahead without rolling backward. HAC is combined with ESC.

D. Safety power windows*

The convenient power windows feature a clever safety function. If they sense an obstacle, the windows automatically stop when closing.

*optional



E. Active headrests

During a rear-end collision, the front active headrests move forward and up to minimise head and neck injuries.

Anti-lock Braking System (ABS)

To help you stay in control during emergency braking, ABS prevents the wheels from locking.



IX20

The Hyundai ix20 is available with the following specification as standard:

Driver and Passenger Front and Side Airbags,
plus Full Length Curtain Airbags
Isofix Child Seat Anchor Points
Dashboard Mounted Seatbelt Warning System with Audible
Warning
Passenger Airbag De-Activation
Active Front Head Restraints
Remote Central Locking with Folding Key

Anti-Lock Braking System (ABS) with Electronic Brake Force
Distribution (EBD)
Electronic Stability Program (ESP)
Hill Start Assist (Manual Only)

Front Fog Lights
Sliding Rear Seat
Reversing Sensors
Manual Air Conditioning
Heated Electric Mirrors
15" Steel Wheels with Hyundai Wheel Trim
Height & Reach Adjustable Steering Wheel

6 Speaker Hyundai Audio System with iPod, AUX, & USB Input
Voice Activated Bluetooth
Steering Wheel Mounted Audio and Telephone Controls

Body Coloured Bumpers and Mirrors
Leather Trimmed Steering Wheel and Gear Knob





THE ALL NEW HYUNDAI *ix20*

Stylish, dynamic, flexible,
practical, beautiful, safe,
entertaining ...

Whatever attribute you're
looking for, the Hyundai ix20
delivers with a comprehensive
range of standard and optional
equipment.

- A. Powerful and stylish
headlights.
- B. For a dynamic look: the
standard rear spoiler with
High Mounted Stop Lamp.
- C. Front fog lights
- D. The outside mirror in body
colour electric and heated.
- E. The striking front.
- F. The striking rear light cluster.



Specification may vary. Please contact your local Hyundai dealer for further details.



A. Leather trimmed multi-function steering wheel.



B. The door armrest with power windows (front and rear) and control buttons for outside mirrors



- 5 YEARS UNLIMITED MILEAGE WARRANTY
- 5 YEARS ROADSIDE ASSISTANCE
- 5 YEARS VEHICLE HEALTH CHECK

Facts and figures
to get everyone
excited.



DIMENSIONS

Interior Head Room, 1st row	1,020 mm
Interior Head Room, 2nd row	980 mm
Interior Leg Room, 1st row	1,080 mm
Interior Leg Room, 2nd row	901 mm
Cargo Volume VDA 211 - VDA 214	440-1,486 l

Specifications

TYPE		DIESEL	PETROL
	Litre	1.4 High	1.4
	Emission	Euro 5	Euro 5
	Transmission	6MT	5MT
ENGINE			
	Displacement	1,396 cc	1,396 cc
	Max. Power	66 kw (90 PS)/ 4,000 rpm	66 kw (90 PS)/ 6,000 rpm
	Max. Torque	220.0 Nm/ 1,750~2,750 rpm	14.0kg.m/137.3 Nm/4000rpm
	Max. Speed	167 kph	167 km/h
	Acceleration (0-100 kph)	14.5 sec	12.9sec
FUEL CONSUMPTION			
Standard	Urban (litre/100km)	5.0	7.2
	Extra Urban (litre/100km)	4.2	5.3
	Combined (litre/100km)	4.5	6.0
	CO ₂ Combined (g/km)	119	140
	Fuel Tank Capacity	48 litres	48 litres
WEIGHT			
Curb Weight	Lightest	1,270 kg	1,178kg
	Heaviest	1,370 kg	1,268 kg
Trailer Weight	With Brake (12%)	1,300 kg	1,300 kg
	W/o Brake	550kg	550kg
STEERING			
	Steering	Rack & Pinion / Motor Driven Power Steering (MDPS)	Rack & Pinion / Motor Driven Power Steering (MDPS)
	Min. Turning Radius	5.21 m	5.21 m
WHEELS & TYRES			
	Wheel	6.0J x 16" (Alloy)	6.0J x 15" (Steel)
	Tyre	205/55R16 (Conti)	195/65R15 (Conti)
	Spare Tyre	Space Saver Spare Wheel	Space Saver Spare Wheel
SUSPENSION			
	Front Suspension	MacPherson Type	MacPherson Type
	Rear Suspension	CTBA Type	CTBA Type
BRAKE			
	General Brake	Disc/Disc (Front and Rear)	Disc/Disc (Front and Rear)
	Front Brake Type	Disc - 15" (280 x 26 t)	Disc - 15" (280 x 26 t)
	Rear Brake Type with ABS	Disc - 14" (258 x 10 t)	Disc - 14" (258 x 10 t)

• Please consult your dealer/www.hyundai.ie for details on wheel energy efficiency rating

Specification may vary. Please contact your local Hyundai dealer for further details.

Colours



Creamy White



Sleek Silver



Steel Grey



Phantom Black



Ice Blue



Blueberry



Cashmere Brown



Cool Red

Upholstery



Black knit

Hyundai G3 Glasscoat

This revolutionary product once applied by our specialists gives your car a ceramic-hardened glass finish to protect paintwork and wheels - so that your car stays visibly cleaner for longer



Specifications shown in this brochure are based on the latest available information at the time of printing. The colours and finishes reproduced in this brochure are subject to the limitations of the printing process and may vary from the actual colour and paint finish. In line with our policy of continual product improvement, Hyundai Cars Ireland reserves the right to make changes at any time, without notice, to prices, colours, material, design, shape, specifications and models, and to discontinue items. For the latest details, please consult your Hyundai dealer.

Accessories



Towbar
Fixed Towbar: Part No: 1K280ADE00
Detachable Towbar: Part No: HMY5010012



Roof Rack Aluminium
Part No: 1K210ADE00AL/ME



Bumper Protection Foil Black
Part No: 1K272ADE01



Carpet Mats
Part No: HMY0110018



Trunk Mat
Part No: 1K120ADE00



Wind Deflector
Part No: 1K221ADE00



Body Decal Orange Foil Ad Circ/Black
Part No: 1K200ADE100R/Black



Body Decal Orange Foil FF Circ/Black
Part No: 1K200ADE300R/Black



Trunk Liner
Part No: 1K122ADE00



Passenger seat storage net
Part No: 99170ADE00



Rear seat entertainment cradle.
Part No: 99582ADE00



Body Styling Kit Carbon
Part No: 1K300ADE00



Alloy Wheels
16" Alloy Wheels: Part No: 1KF40AC100 (without TPMS)
17" Alloy Wheels: Part No: 1KF40AC200 (without TPMS)

THE FUTURE IS CERTAIN.

There is one thing the new Hyundai ix20 has no room for: worries. Instead, we give drivers complete peace of mind with a warranty service that you can trust. Our 5 Year Warranty Package reflects our commitment to giving you the best quality and customer care. As a result, you can focus on enjoying the drive for years to come.

As well as the standard benefits of the Hyundai 5 Year Warranty Package, for a small additional amount, you can also fix the cost of your vehicle servicing for up to 5 years, with our Complete Care fixed price service plans. Please ask your dealer for more details or log onto www.hyundai.ie

As a Hyundai owner you will be eligible to join our exclusive owners' rewards club, MyHyundai.

The Hyundai Loyalty Club is a website resource for owners where they can check & store information about their car, communicate with their dealer and get various discounts and special offers from their dealer, Hyundai and partner brands.



THE FUTURE IS CERTAIN.

Your Hyundai ix20 is built to the highest quality standards. To ensure your complete satisfaction, we also offer our highest level of warranty protection: the 5-Year Unlimited Mileage Warranty that reflects our commitment to long-term quality assurance and customer care.



5-YEAR UNLIMITED MILEAGE WARRANTY

Your 5-year unlimited mileage* warranty provides bumper to bumper coverage, including powertrain, plus a 12-year anti-perforation warranty. Your warranty is valid in 26 countries across Europe, excluding Russia, Croatia, and Ukraine.

*Vehicles used for taxi or rental car purposes are covered by a 3-year, 100,000 km warranty.

CARE & RELATION

▶ The promise of a generous brand that cares about consumer needs, listens to feedback, and is keen on understanding how it can make a difference to people's lives.



5-YEAR ROADSIDE ASSISTANCE

As part of Hyundai's commitment to aftersales excellence, we have teamed up with AA Ireland offering you Hyundai Assist Roadside Assistance.

STRESS-FREE

▶ A commitment to improve the quality of the ownership experience over time.



5-YEAR VEHICLE HEALTH CHECK

In addition to your scheduled service maintenance, your Hyundai dealer will perform a check on key elements of your ix20, including engine, transmission, steering, suspension, and brake systems, during your 5-year warranty period.

RELIABLE

▶ A reassurance over Hyundai's quality product, aimed at reducing perceived risks and lowering barriers to consideration.

Hyundai is constantly focused on understanding the changing needs of our customers. This is why we carefully listen to your feedback, and never stop the search for new ways to increase your long-term satisfaction as a Hyundai owner.

We hope our 5-Year Warranty Package shows our commitment, appreciation, and focus on ensuring a reliable premium ownership experience. Together with our dealers across Ireland, we look forward to serving you, and exceeding your expectations each time you turn to us.*

*Taxi's, PSV's and Commercial vehicles will receive Hyundai's 3-year warranty. For more information please consult your main Hyundai dealer.



PROPOSE

NEW THINKING. NEW POSSIBILITIES.

People's expectation toward individual mobility requires more than just a convenient means of transportation. The old understanding of cars has become outdated. A car represents individuals' lifestyles, and has become an integral part of their lives. At the same time, the automobile industry has experienced seismic change.

Hyundai Motor Company has grown rapidly to become one of the largest automakers, backed by world class production capability and superior quality. We have now reached a point where we need a qualitative approach to bring bigger ideas and relevant solutions to our customers. This is an opportunity to move forward and we have developed a new brand slogan that encapsulates our willingness to take a big leap. Led by our new slogan and the new thinking underlying it, we will become a company that keeps challenging itself to unlock new possibilities for people and the planet.

Hyundai Cars Ireland Ltd
Hyundai House,
JFK Drive, Naas Road,
Dublin 12.

Tel: 01 2405621
Email: info@hyundai.ie
www.hyundai.ie



twitter.com/HyundaiCarsIrl



- 5 YEARS UNLIMITED MILEAGE WARRANTY
- 5 YEARS ROADSIDE ASSISTANCE
- 5 YEARS VEHICLE HEALTH CHECK