

THE ALL-NEW SANTA FE





Discover the perfect family car.

Every family is different. To build the perfect family car, you have to understand every single family just like we do. The All-New Santa Fe was built to fit all varieties of the modern family – no matter how it looks like.





Discover togetherness.

We know that nothing is more important than spending quality time with family and friends. That's why the All-New Santa Fe gives you the comfort and freedom to enjoy those precious moments with your loved ones. Anytime, anywhere.



Radiator Grille / LED Daytime Running Lights (DRL) / LED Headlamps / LED Fog Lamps



Roof Rack / Side Garnish



LED Rear Combination Lamps / LED Rear Fog Lamps

Discover quality time.

Roomy interiors with increased legroom and plenty of space in the trunk offer all the comfort you need for greater moments with your family.



Best in Class 2nd Row Space





Discover seven seats.



7 seats

3rd row folded

3rd row folded and
2nd row folded 40%

3rd row folded and
2nd row folded 60%

2nd and
3rd row folded

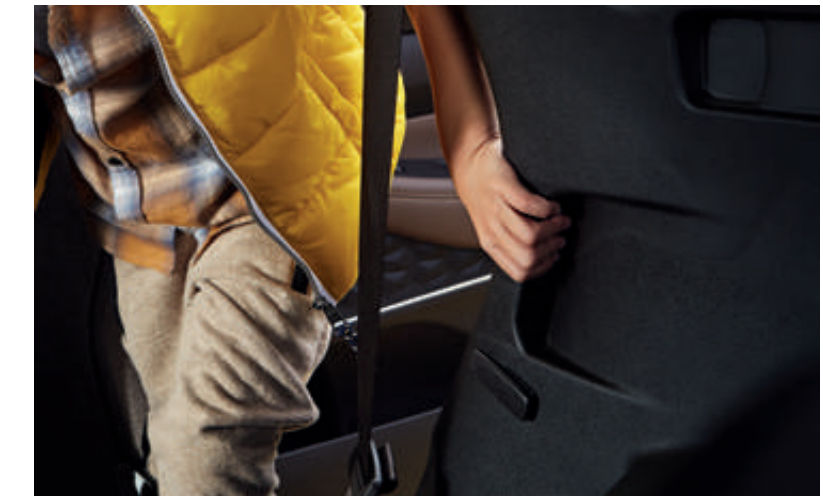
No matter the size of your family, or whether you are into picnics, golfing or camping, the 7-passenger Santa Fe offers full flexibility with multiple seat configurations available.

There are multiple configurations possible to fit your needs. With the 2nd and 3rd row folded flat, there's plenty of cargo space to load up on quality time with.



One-Touch Folding

The one-touch folding feature allows you to fold the 2nd row seat easily with the push of a button.



Walk-in Handle

Climb into the car easily by gripping the rear seat walk-in handle located on the inside of the car.





Take care of your loved ones 24/7.



Advanced High Strength Steel (AHSS)

With the extensive use of additional hot stamping materials and Advanced High Strength Steel (AHSS) plates, the average tensile strength and skeletal rigidity of the car body has been improved by 15% and 17% respectively, providing a highly stable and quiet drive at once.

6-airbag System

A 6-airbag system with front & side airbags and curtain airbags offers broad collision protection. Advanced frontal airbags determine when and how to deploy pressure in an accident by sensing occupant's position, seat belt use and the severity of the crash.

Discover Hyundai SmartSense

With Hyundai SmartSense, our cutting-edge Advanced Driver Assistance Systems, the Santa Fe comes with the latest active safety technology – built to provide you with more safety and peace of mind.



Lane Keeping Assist (LKA)

A front view camera detects lane markers and road edges helping prevent unintentional lane departures. When the vehicle strays from its lane (or road), the system sets off a visual and sound alarm and automatically steer the vehicle to prevent it from moving out of its lane (or road).

* Lane Departure Warning (LDW) function is included in this feature.



Smart Cruise Control with Stop & Go (SCC w / S&G)

This system will maintain the driver's pre-set speed and distance from the vehicle ahead without requiring the driver to use the accelerator or brake pedals.

*Smart cruise control on automatic models

*Standard cruise control on manual models

Blind-Spot Collision-Avoidance Assist (BCA)

Radar sensors in the rear bumper are used to warn the driver of approaching vehicles in the blind spot area and activate the brakes when there is a collision risk in lane changing maneuvers.



Forward Collision-Avoidance Assist (FCA) – Sensor Fusion Type

Front view camera and front radar are in place to warn the driver of imminent collisions with other vehicles, or even certain types of objects; and if necessary apply emergency braking to prevent from collision.

* Forward Collision Warning (FCW) is included in this feature.

* FCA - Camera Type only detects vehicles.



Safe Exit Assist (First in class)

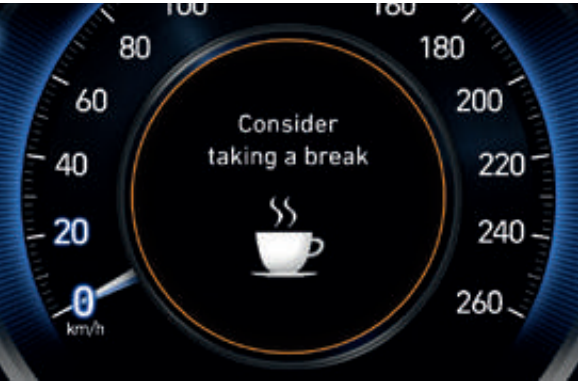
Keep your family safe with the Safe Exit Assist. The Santa Fe senses vehicles approaching from the rear and keeps the child lock active preventing passengers from getting out. When the vehicles have passed, a simple push of a button unlocks the door for a safe exit.



Rear Cross-Traffic Collision-Avoidance Assist (RCCA)

Radar sensors in the rear bumper monitor cross traffic approaching from left and right side of the vehicle during reverse maneuvers, and if necessary apply emergency braking to prevent from collision.

* Rear Cross-Traffic Collision Warning (RCCW) is included in this feature.



Driver Attention Warning (DAW)

This system recognises signs of driver's fatigue and issues and alert advising the driver to take a break.

Around View Monitor

A multi-camera system provides a 360-degree view around the vehicle to assist the driver in parking situations.



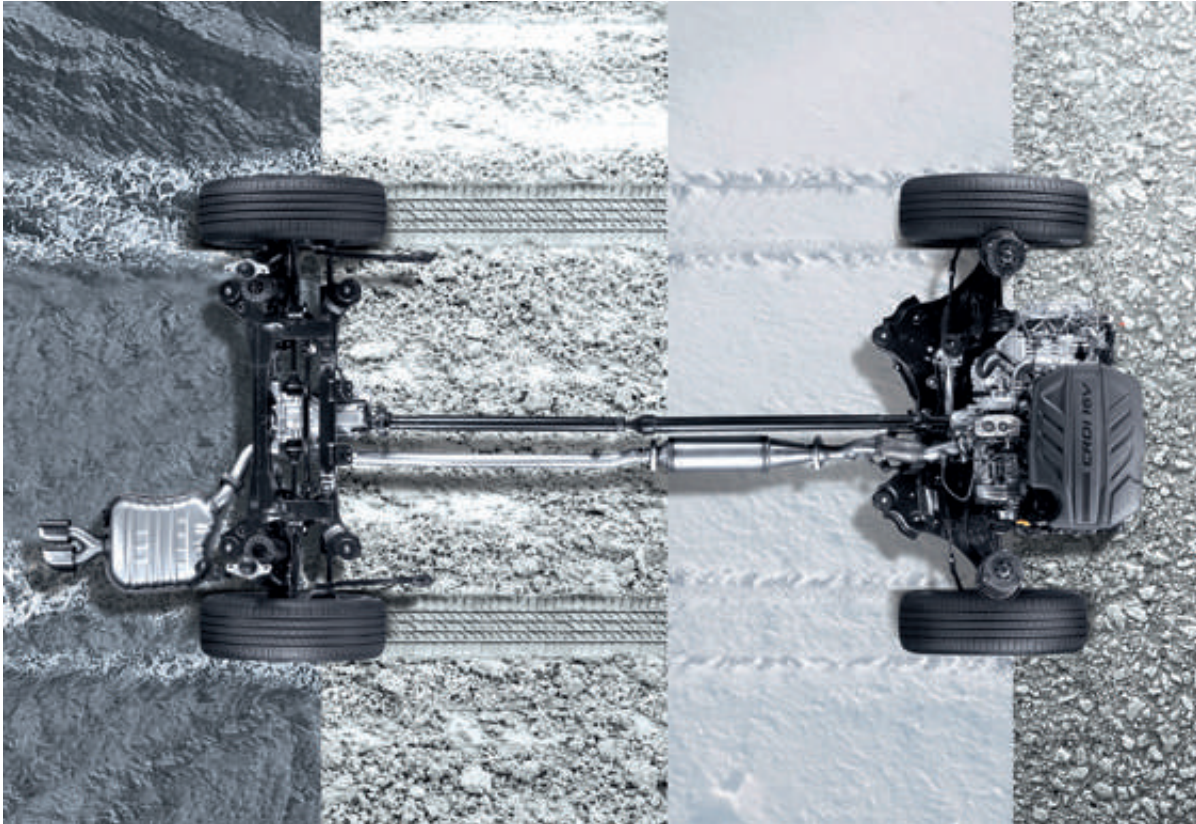
Discover variety.

The Santa Fe is the first SUV with HTRAC technology, allowing you to choose the ideal driving mode for your road adventures. City or cross country driving, with the HTRAC technology you will always have the power to go further on the road.



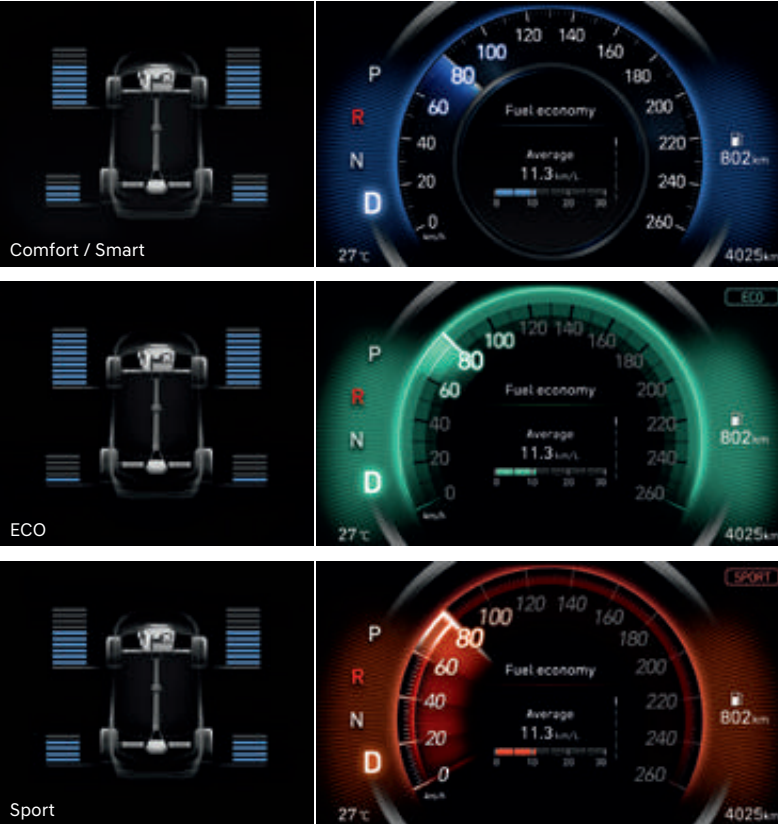
HTRAC All-Wheel Drive

HTRAC is an electronic all-wheel drive system that automatically detects vehicle's speed and road conditions to control braking between the left and right wheels and apply active torque control between the front and rear axles, in order to ensure stability while driving and cornering on slippery roads.



Driving Mode

The colour of the instrument panel changes according to the driving mode selected (Comfort, ECO, or Sport). Comfort mode provides optimised torque transfer for stable driving, ECO mode prioritises fuel economy, while Sport mode boosts performance to deliver a dynamic drive. Finally, use the Smart mode to automatically switch among the other modes based on road conditions and driving style.



Features



7" TFT LCD Cluster



8" Navigation System



Full Auto Air Conditioning System



Electric Parking Brake (EPB)



Krell Speaker



Radiator Grille



LED Daytime Running Lights (DRL)



LED Headlamps



LED Rear Combination Lamps



LED Outside Mirror Repeaters



Outdoor Handles



Beltline Molding



Safety Power Window



Panorama Sunroof



Rear Door Manual Curtain

Interior colours



Burgundy Colour Interior



Black One-tone Interior



Dark Beige Two-tone Interior

Wheels



17" Alloy Wheels



18" Alloy Wheels



19" Alloy Wheels

Santa Fe Equipment Specification

Comfort Plus

The Hyundai Santa Fe Comfort Plus model comes with the following features as standard:

- 17" Alloy Wheels
- Mud Guards
- Rear Spoiler with High Mounted Stop Light
- Roof Rails
- Chrome Coating On Interior Door Handles
- 3.5" TFT Instrument Cluster
- Heated Steering Wheel
- Leather Steering Wheel & Gearknob
- 7 Seat Configuration
- Cloth Seats
- Full Automatic Air Conditioning
- LED Daytime Running Lights
- Drive Mode Select
- Heated Exterior Power Mirrors in Body Colour and Integrated LED Indicator
- Front & Rear Power Windows With Auto Down & Safety Function
- Rain Sensitive Wipers
- Automatic Headlamp Sensor
- Steering Remote Control
- Temporary Steel Spare Wheel & Tyre
- Rear Parking Sensors
- Radio with RDS & Mono Integrated 5" Screen
- AUX & USB Connections
- Bluetooth Hands Free
- Cruise Control (Manual Transmission Only)
- Folding Key & Burglar Alarm
- Front, Side and Curtain Airbags
- Lane Keep Assist (LKAS)
- Driver Fatigue Detection
- Autonomous Emergency Braking (Car/Pedestrian/Bicycle)

Executive Plus

The Santa Fe Executive Plus model includes everything from the Comfort Plus as well as the following features:

- 18" Alloy Wheels
- Satin Chrome Exterior Door Handles (Except Phantom Black and Magma Red)
- Dark Chrome Exterior Door Handles (Phantom Black and Magma Red)
- Radiator Grille (Black/Chrome Coating)
- Chrome Exterior Door Handles
- Solar and Privacy Glass
- Rear Door Curtain (Manual)
- Electric Parking Brake with Auto Hold Facility (Automatic Transmission Only)
- Leather Seats (Adds Delux Cloth for Roof & Pillars)
- Front and Rear Seat Warmers
- Fog Lamps - Rear LED
- LED Rear Combination Lamp
- Rear Air Conditioning
- Rear View Mirror: Electro Chromatic Anti Dazzle with Integrated Compass
- Front and Rear Parking Sensors
- Radio with RDS: Integrated 7" Colour Screen
- Apple Car Play and Android Auto
- Wireless Phone Charger

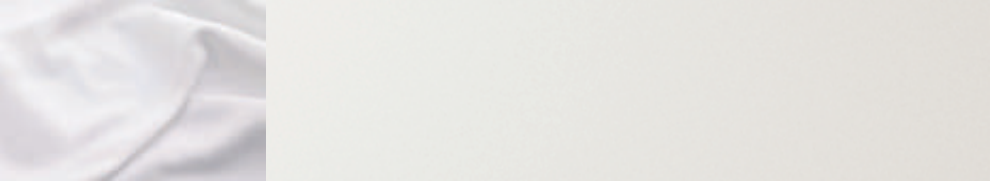
Santa Fe Equipment Specification

Premium Plus

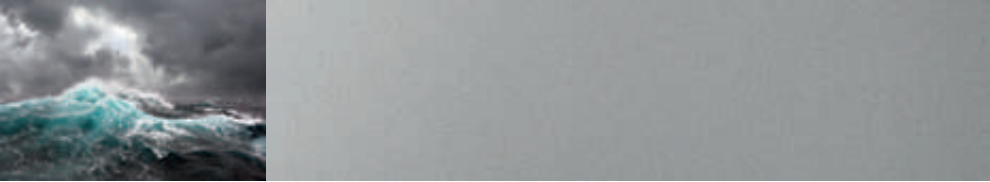
The Santa Fe Premium Plus model includes everything from the Executive Plus as well as the following features:

- 19" Alloy Wheels
- 7" TFT Supervision Cluster
- Power Driver Seat
- Panoramic Sunroof
- LED Headlamps
- Fog Lamps - Front & Rear LED
- Puddle Lamp
- Heated Exterior Mirrors with Folding Function and Integrated LED Indicator
- Gearbox Paddle Shift (Automatic Transmission only)
- Radio with RDS: Integrated 8" Colour Screen
- Navigation System
- Around View Monitor (Automatic Transmission Only)
- Head Up Display
- Advanced Smart Cruise Control System (Automatic Transmission Only)
- Blind-Spot Collision Warning System
- Smart Key

Exterior colours



Ice White



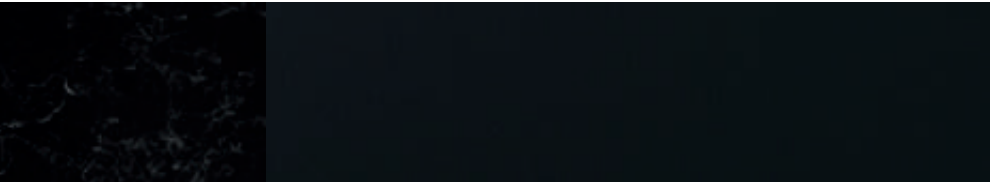
Typhoon Silver



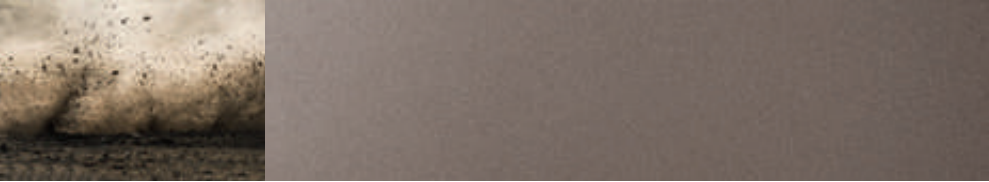
Wild Explorer



Magnetic Force



Phantom Black



Earthy Bronze



Magma Red



Horizon Red



Rain Forest



Stormy Sea

Specifications

Type	2.2 CRDi Diesel Engine			2.2 CRDi Diesel Engine	
Transmission	Manual			Automatic	
Engine Type	4-Cylinders DOHC			4-Cylinders DOHC	
Displacement (cc)	2,199			2,199	
Max. Power (ps / rpm)	200/3,800 (EU6)			200 / 3,800 (EU6)	
Max Torque (kg-m / rpm)	45.0 / 1,750 - 2,750 (EU6)			45.0 / 1,750 - 2,750 (EU6)	
Trim	2WD Comfort Plus	2WD Executive Plus	4WD Executive Plus	4WD Executive Plus Automatic	4WD Premium Plus Automatic
Emissions (NEDC Values)					
Urban Conditions					
CO2 Emissions (g/km)	177	176	182	194	196
Fuel Consumption (l/100km)	6.7	6.7	6.9	7.4	7.5
Extra Urban Conditions					
CO2 Emissions (g/km)	144	131	143	145	146
Fuel Consumption (l/100km)	5.2	5.2	5.4	5.5	5.6
Combined					
CO2 Emissions (g/km)	155	148	157	163	164
Fuel Consumption (l/100km)	5.9	5.6	6.0	6.2	6.3
Actual mass of vehicle (kg)	1928	1955	2020	2025	2077

- The above values are results from internal testing and are subject to change after validation.
- Some of the equipment illustrated or described in this catalogue may not be supplied as standard equipment and may be available at extra cost.
- Hyundai Cars Ireland reserves the right to change specifications and equipment without prior notice.
- The colour plates shown may vary slightly from the actual colours due to the limitations of the printing process.
- Please consult your dealer for full information and availability on colours and trims.



Overall Width 1,890



Overall Length 4,770
Wheel Base 2,765

Overall Height
(Including roof rack)

1,680 (1,705)



For every kind of family.
Especially yours.



Dealer stamp



Hyundai
SmartSense

*The Hyundai 5-Year Unlimited Mileage Warranty applies only to Hyundai vehicles that have been originally sold by an authorised Hyundai dealer to an end-customer, as set out in the terms and conditions of the warranty booklet.

All the information contained in this brochure is provisional and subject to change without notice and is intended only as preliminary notification. Possible variations in the representation of vehicle colours are due to the limitations of printing technology. The products shown correspond to the offer and the range of equipment for the Irish market. The vehicles shown in this brochure may be equipped with additional equipment at extra cost, and not all model versions are included in this brochure. Hyundai Cars Ireland reserves the right to make changes to technical specifications and equipment content without notice. Please consult your Hyundai dealer for exact details.